

REGULATION INFORMATION

The StenoCast X7 must be installed and used in strict accordance with the manufacturer's instructions. This device complies with the following radio frequency and safety standards. This device complies with Part 15 of the FCC Rules. Operation is subject to the following two conditions:

- (1) This device may not cause harmful interference.
- (2) This device must accept any interference received, including interference that may cause undesired operation.

Federal Communication Commission Interference Statement

This equipment has been tested and found to comply with the limits for a Class B digital device, pursuant to part 15 of the FCC Rules. These limits are designed to provide reasonable protection against harmful interference in a residential installation. This equipment generates, uses and can radiate radio frequency energy and, if not installed and used in accordance with the instructions, may cause harmful interference to radio communications. However, there is no guarantee that interference will not occur in a particular installation. If this equipment does cause harmful interference to radio or television reception, which can be determined by turning the equipment off and on, the user is encouraged to try to correct the interference by one or more of the following measures:

- Reorient or relocate the antenna.
- Increase the separation between the equipment and the receiver.
- Connect the equipment into an outlet on a circuit different from that to which the receiver is connected.
- Consult the dealer or an experienced radio/TV technician for help.

Installation and use of this Wireless LAN device must be in strict accordance with the instructions included in the user documentation provided with the product. Any changes or modifications (including the antennas) made to this device that are not expressly approved by the manufacturer may void the user's authority to operate the equipment. The manufacturer is not responsible for any radio or television interference caused by unauthorized modification of this device, or the substitution of the connecting cables and equipment other than manufacturer specified. It is the responsibility of the user to correct any interference caused by such unauthorized modification, substitution or attachment. Manufacturer and its authorized resellers or distributors will assume no liability for any damage or violation of government regulations arising from failing to comply with these guidelines.

FCC Radiation Exposure Statement : This equipment complies with FCC radiation exposure limits set forth for an uncontrolled environment. This transmitter must not be co-located or operating in conjunction with any other antenna or transmitter.

Your device contains a low power transmitter. When device is transmitted it sends out Radio Frequency (RF) signal.

In order to maintain compliance with the FCC RF exposure guidelines, this equipment should be installed and operated with minimum distance 20cm between the radiator and your body. Use only with supplied antenna. Unauthorized antenna, modification, or attachments could damage the transmitter and may violate FCC regulations.

Table of Contents



Make sure the Power schemes is set to “Always On,” and the Settings for Always On power schemes are all set to “Never.”

Page 4	Thank You / System Requirements
Page 5	StenoCast X7 Quick Setup Guide
Page 7	How to check your COM Port Settings
Page 8	CaseCAT Software Configuration
Page 9	Total Eclipse Software Configuration
Page 10	DigiCAT Software Configuration
Page 11	StenoCAT Software Configuration
Page 13	SmartCAT Software Configuration
Page 15	Getting Familiar with Your StenoCast X7

Thank you

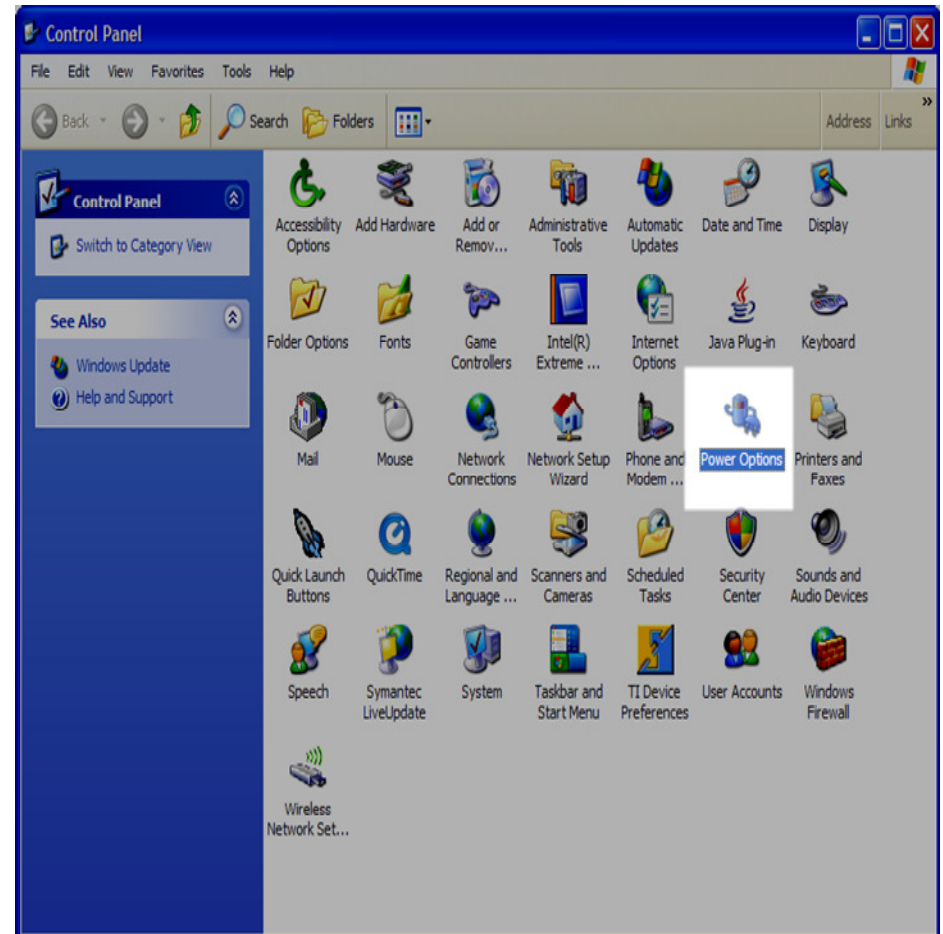
Thank you for purchasing the StenoCast X7 Wireless Realtime System featuring Bluetooth wireless technology. The StenoCast X7 creates a wireless connection between the Court Reporter's laptop and up to seven attorney/client laptops.

FEATURES

- Support for Microsoft Windows 98, Windows 2000, XP Home, Windows XP Pro, Vista
- Easy operation and setup
- Sends a Wireless Realtime Signal to up to seven clients

SYSTEM REQUIREMENTS

- One available built-in Serial Port **or** one available USB port.



In Control Panel double click the Power Options icon.

StenoCast X7 Quick Setup Guide

Power Management: Laptop

- Turn off power saving features

Step 1:

Check the contents of your StenoCast X7 System. There should be:

- 1 StenoCast X7 Unit
- 1 USB cable
- 1 StenoCast X7 tote bag
- 1 StenoCast Driver CD (with manuals)
- 1 StenoCast X7 Instruction Manual and Quick Setup guide
- 1 AC power supply (not needed if you plug in via USB)
- 1 Serial cable (not needed if you plug in via USB)
- 1 or more USB or serial Ez Receivers

Step 2:

- 1) Insert the StenoCast CD into your computer.
- 2) Plug one end of the USB cable into the X7 and the other end into your computer. A New Hardware Wizard window will open.

Note: If a New Hardware Wizard window opens, asking if you would like to search the internet to locate the driver, select, “**No, not at this time,**” and click **Next**.

- 3) At the next window select **Install from a list or specific location (Advanced)** and click **Next**.
- 4) At the next window check the box that says, “**Search removable media (floppy, CD-ROM...)**” and click **Next**.
- 5) At the **Completing the Found New Hardware Wizard** window click **Finish** to complete the first component of the installation.
- 6) The New Hardware Wizard will immediately reopen. Repeat the instructions in steps 3 through 5 to install the remaining component, and then click **Finish**.

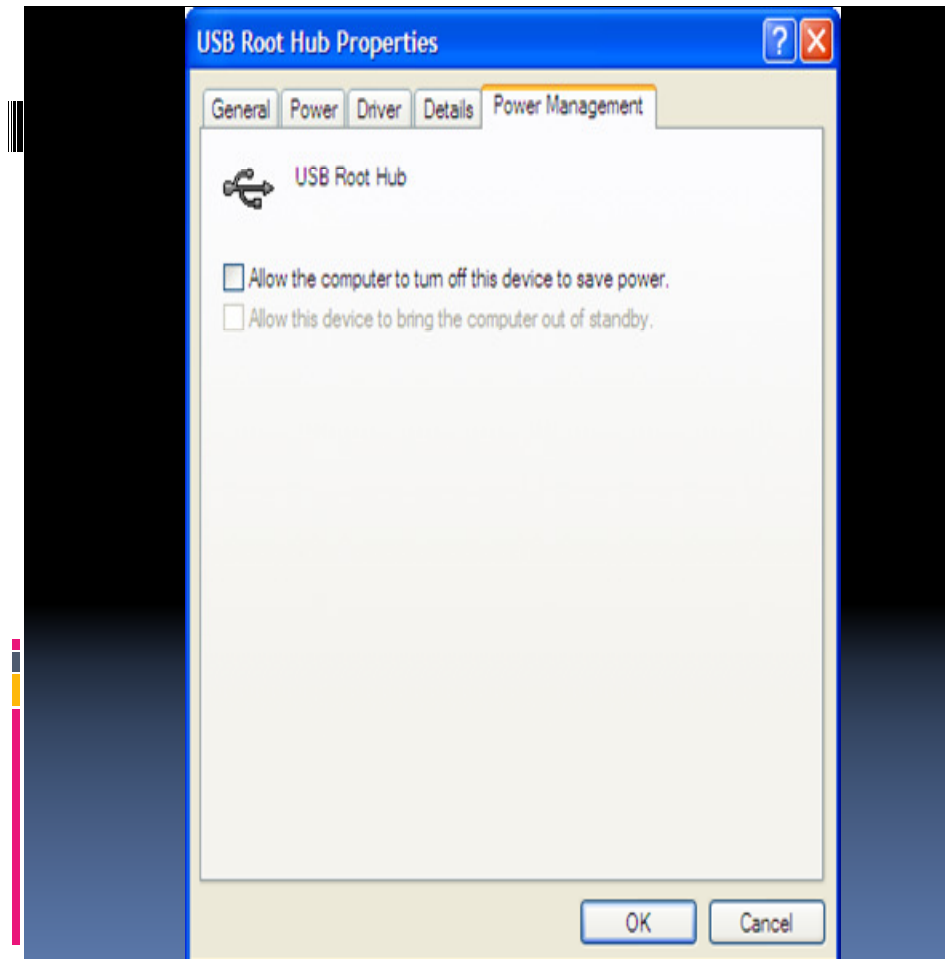
Proceed to page 7.

Step 3:

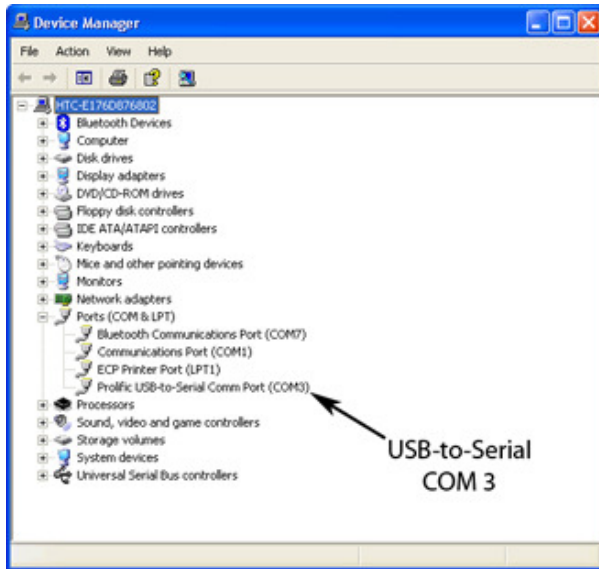
If the New Hardware Found wizard does not open and a window opens that indicates that new hardware was found and is ready to use, please proceed to page 7 to locate the COM port selected for the X7 device.

If your (court reporter) computer has a serial port and you would prefer to connect the X7 via that serial port, then proceed to connect one end of the serial cable into your computer's serial port and the other end of the serial cable into the X7 unit. You will then need to plug in the AC power adapter which was provided to power the X7 unit.

Whether connected via your USB port or via the serial port, your StenoCast X7 is now properly connected to your computer. Proceed to the next section for instruction on checking the Com Port number assigned to your X7.



Make sure there is not a check mark in the box next to “Allow the computer to turn off this device to save power.” After you click “OK,” then proceed to the next “USB Root Hub” and double click that item and repeat these same steps.



Step 4:

Once the Device Manager window is visible, you should see a section labeled **PORTS**. Click on the **+** sign to expand the tree. Locate what COM port the StenoCast X7 has been assigned to. Once you know the COM port number the X7 is assigned to, you are then ready for the last part of the Reporter computer setup.

Power Management: USB

- Turn off USB power saving mode

CaseCat Configuration

How to View Device Manager when you are “Locked Out”

Click on the Start button, and then click Help and Support.

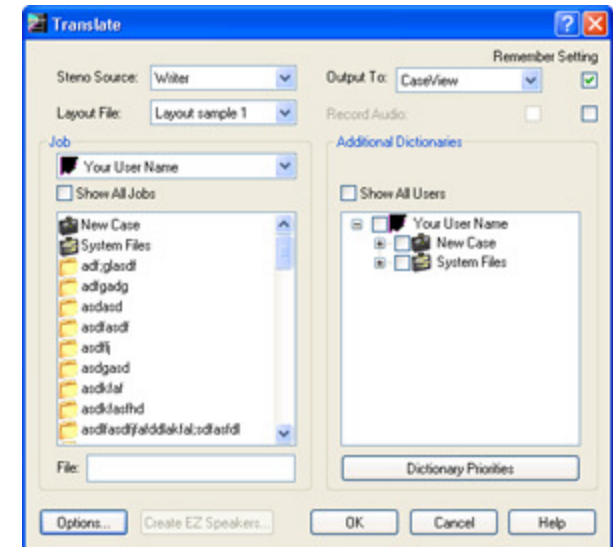
In the upper left corner you should see a Search box. Type in “Device Manager” and click the arrow.

When the search results are displayed, in the left column under the heading Overviews, Articles and Tutorials, at the bottom you will see “Device Manager.” Click on “Device Manager.”

When the results are displayed in the main pane, you can then click on “Open Device Manager.”

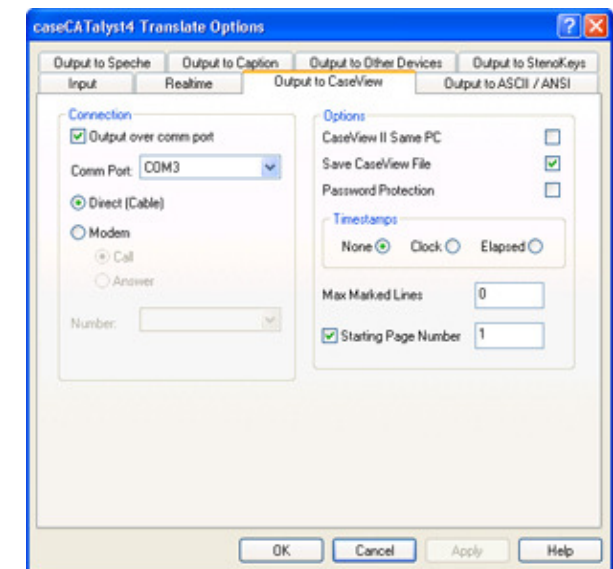
Step 1:

From the Default screen Click the **Translate** button or type **Ctrl+T** to enter the translate window. In this window make sure the **Output To** pull-down menu is set to **CaseView** and the **Remember Setting** box is Checked. Next, **Click** the **Options** tab in the lower left corner of the translate window.



Step 2:

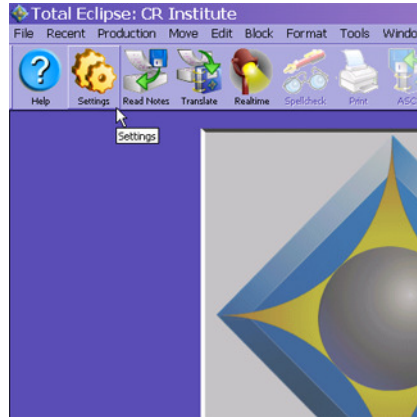
Then Click the **Output to CaseView** tab. In this window make sure your **COM Port number matches the COM port assigned to your StenoCast X7**. Also, make sure that the **Output over comm port** box is checked and the **Direct (Cable)** bubble is selected. That's it. Your CaseCat software is now configured to use the StenoCast X7. To set up an attorney or client computer to receive realtime from the StenoCast X7, please see the X7 Client Manual.



Total Eclipse Configuration

Step 1:

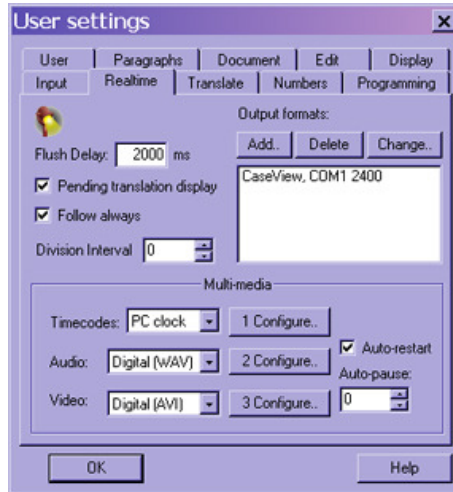
From the default screen
Click the **Settings** button in the upper left area of the screen.



At the bottom of this window you will see COM Port Number and a drop-down menu with a COM port listed. Select a COM number (lower numbers are better) and then click OK. You may then receive a warning message. Click Yes that you would like to continue.

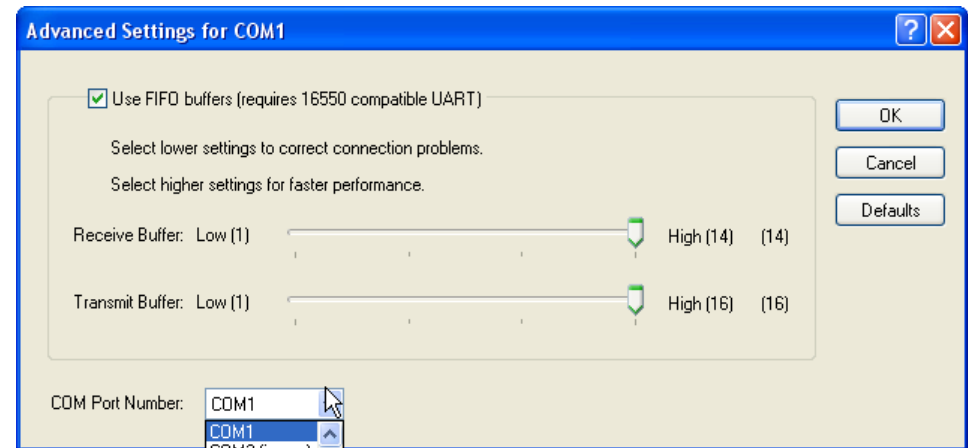
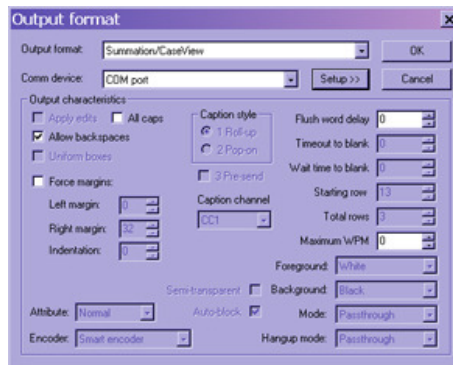
Step 2:

Click the **Realtime** tab near the top of the window. You should see the current output format in this window. Now **Click** the **Change** button under **Output formats**. This will open the Output format window.



Step 3:

Now use the pull-down menu next to **Output format** and select **Summation/CaseView**. Next, **Click** the **Setup** button. This will open the **COM Port Setup** window. Make sure the proper output **COM Port** is selected and the **baud rate** is set at **2400**.



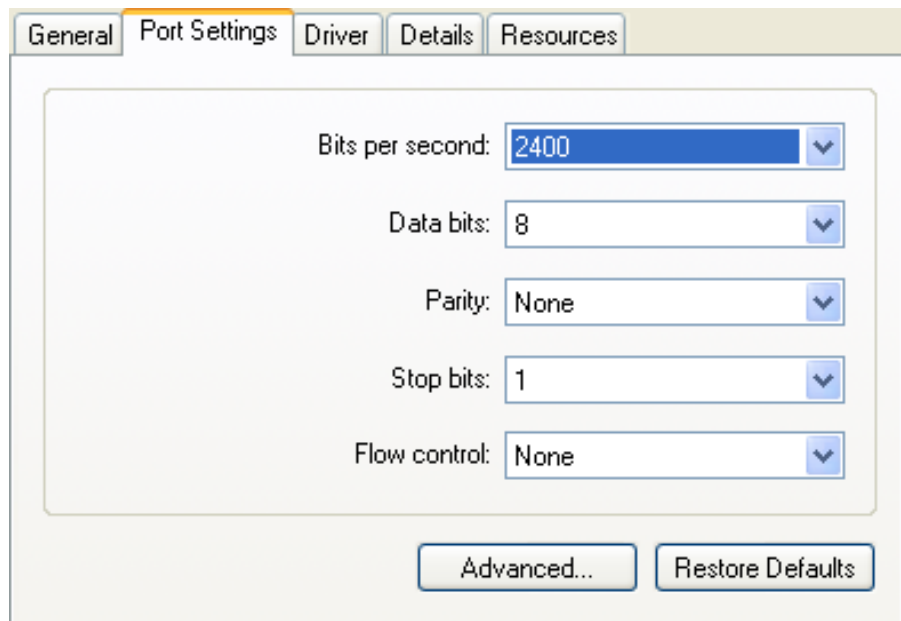
How to Change an Assigned COM Port Number

Go to Device Manager / Ports

Double click on the port you would like to assign a different COM port number to.



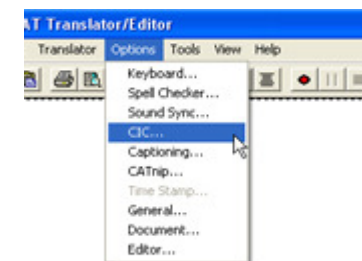
Select the Port Settings tab, and then click Advanced



DigiCAT Configuration

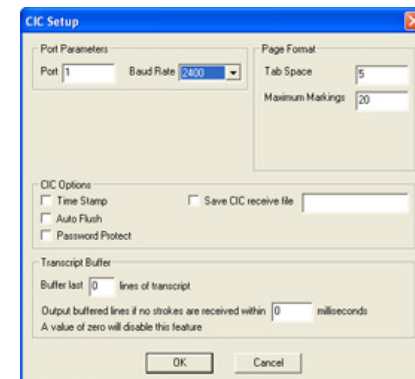
Step 1:

From the default screen of DigiCat, Click the **Options** tab and select **CIC** from the menu. This will open the CIC Setup window.



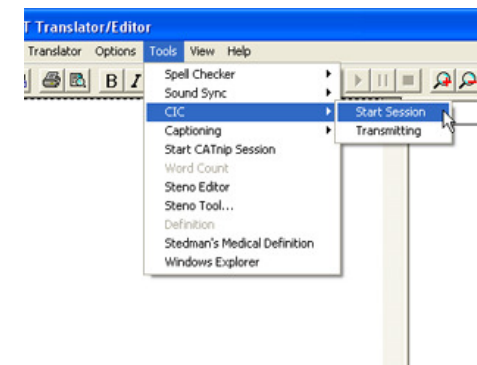
Step 2:

Once in the CIC Setup window, make sure that the **COM port listed matches that of the COM-port that your StenoCast X7 is assigned to in the Device Manager**. Then set the **baud for 2400**. That's it for the setup. The next step will show how to initiate realtime transmission in DigiCAT.



Step 3:

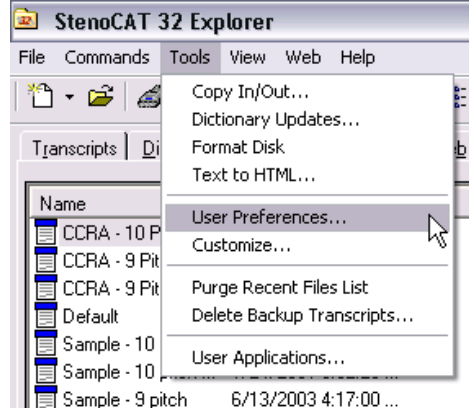
In order to send out Realtime in DigiCat, Realtime must be initialized. When starting Realtime, select the **Tools** menu on the default screen. Then find **CIC** on the pull-down menu and select **Start Session**. DigiCat will now send out Realtime. To set up an attorney or client computer to receive realtime from the StenoCast X7, please see the X7 Client Manual.



StenoCAT Configuration

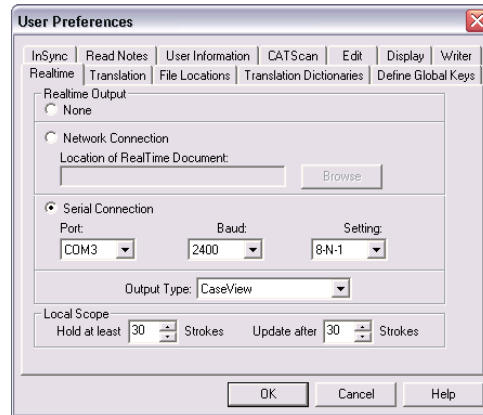
Step 1:

From the default screen open the **Tools** menu at the top of the window. Then select **User Preferences** from the menu.



Step 2:

You should now see the User Preferences window. First, click on the **Realtime** tab near the top of the window. Make sure the bubble next to **Serial Connection** is selected. Then make sure the proper output COM port is selected and the baud rate is set to **2400**. Next, check the Setting pull-down menu. It should show **8-N-1**. Then make sure the Output Type is set to **CaseView**. Next click **OK** to save the settings. Your Realtime output settings are now configured for your StenoCast X7. Proceed to the next step for connection instructions.



LCD Screen Messages

StenoCast X7 Status Ready

Your X7 is plugged into either the USB port or the optional AC power adapter, and the X7 unit is powered on. No wireless connection has been established with any Ez Receivers.

StenoCast X7 Clients Online

One or more Ez Receivers have connected with the X7. Realtime is ready to be initiated. If no steno strokes have been hit, Test Mode will be initiated.

Clients Online Realtime Online

The wireless connection is established and realtime is being transmitted by the X7 and received by one or more Ez Receivers.

Getting familiar with your StenoCast X7

Almost all reporters will connect to their X7 via their USB port. You may plug the X7 directly into the computer's USB port or use a USB hub.

Instructions for Judges / Attorneys: Before your first use, insert the StenoCast CD into your CD drive. Double click the circular red icon that says StenoCast Driver. Your USB Ez Receiver driver is now installed. Go to Device Manager and look at Ports to determine what COM port the Ez Receiver was assigned to. It will be entitled, "USB Serial Port" followed by the COM port number. Jot that COM port number down and then enter that number in your litigation-support software's incoming realtime settings.

Reporters: Note: If you see two USB Serial Port devices listed under Ports, simply unplug your X7, wait a few seconds, and then plug it back in. Watch to see which device listing under Ports disappears and then reappears. That will be your X7.

Your X7 kit comes with an optional AC power adapter. If you choose to plug your X7 into your serial port, you will then use the AC power adapter to power the X7 device. If you plug in via your USB port, no outside power source is necessary.

Quick Setup Guide

- 1) Plug the USB cable into the X7 and the other end into your computer.
- 2) Have the Judge/Attorneys plug in their USB Ez Receivers and open up a realtime file in their litigation-support software.
- 3) The X7 will automatically go into Test Mode. The X7 will transmit the message "Wireless Connection Successful" every ten seconds. This will allow the parties to test the realtime signal without the reporter hitting keys on their steno machine. Test mode will stop once the reporter hits their first steno stroke. To re-initiate Test Mode, either unplug the USB cable or AC adapter and then plug it back in, or you may press the reset button on the back of the X7 device.

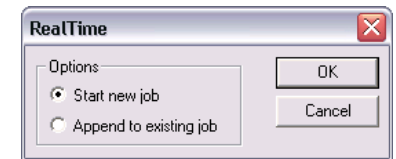
Step 3:

From the default screen open the **File** menu. Then select **Start Realtime**.



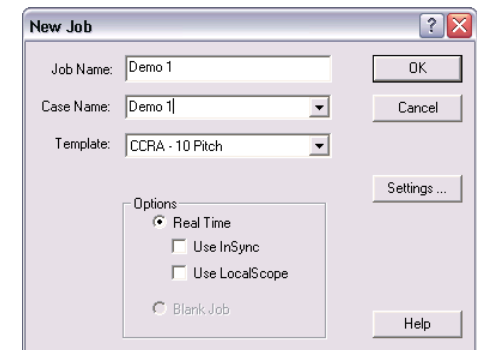
Step 4:

From the Realtime window select **Start new job** (or append to existing job if you wish). Then click **OK**.



Step 5:

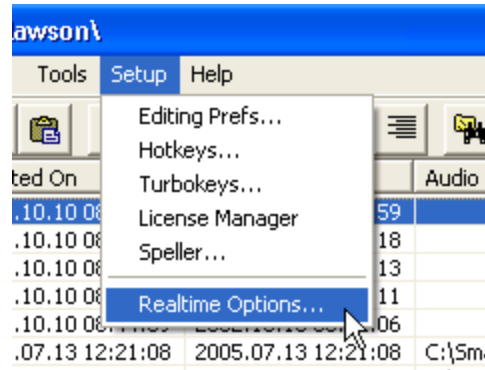
Choose a name for the new job (or select an existing file if appending an existing job). Then click **OK**. That's it. You are now sending out realtime wirelessly with your StenoCast X7. To set up an attorney or client computer to receive realtime from the StenoCast X7, please see the X7 Client Manual.



SmartCAT Configuration

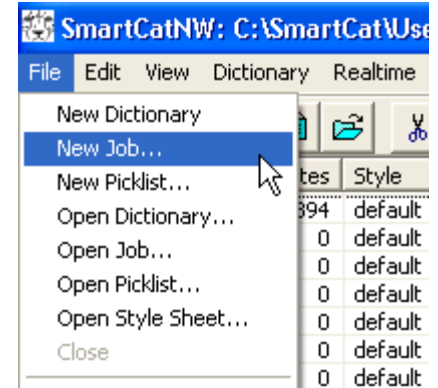
Step 1:

From the default screen open the **Setup** menu at the top of the window. Then select **Realtime Options** from the menu.



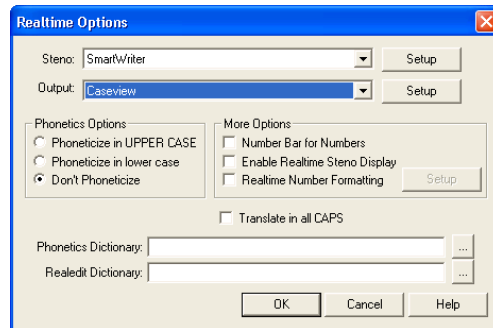
Step 4:

To start realtime in SmartCAT, open the **File** menu near the top of the window. Then select **New Job** from the menu.



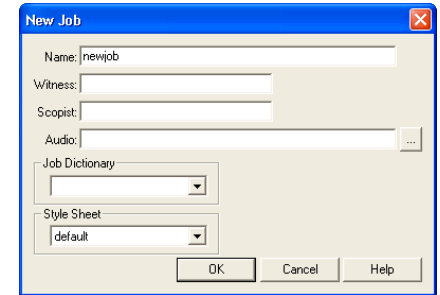
Step 2:

You should now see the Realtime Options window. Select **Caseview** as your Output Format. Then click the **Setup** button next to the Output Format.



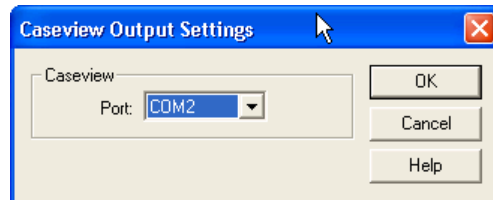
Step 5:

You will now see the New Job window. Enter all appropriate information and then **click OK**.



Step 3:

Once in the Caseview Output Settings window, **make sure that the COM port listed matches the COM port that was assigned to the X7 in the Device Manager**. Proceed to the next step for instructions on how to send out realtime with SmartCAT.



Step 6:

Next, open the **Realtime** menu near the top of the window. Then select **Start Realtime**. You are now sending out Realtime wirelessly with your StenoCast X7. To set up an attorney or client computer to receive realtime from the StenoCast X7, please see the X7 Client Manual.

